



GAT MONTHLY MEMBERSHIP PROGRESS REPORT

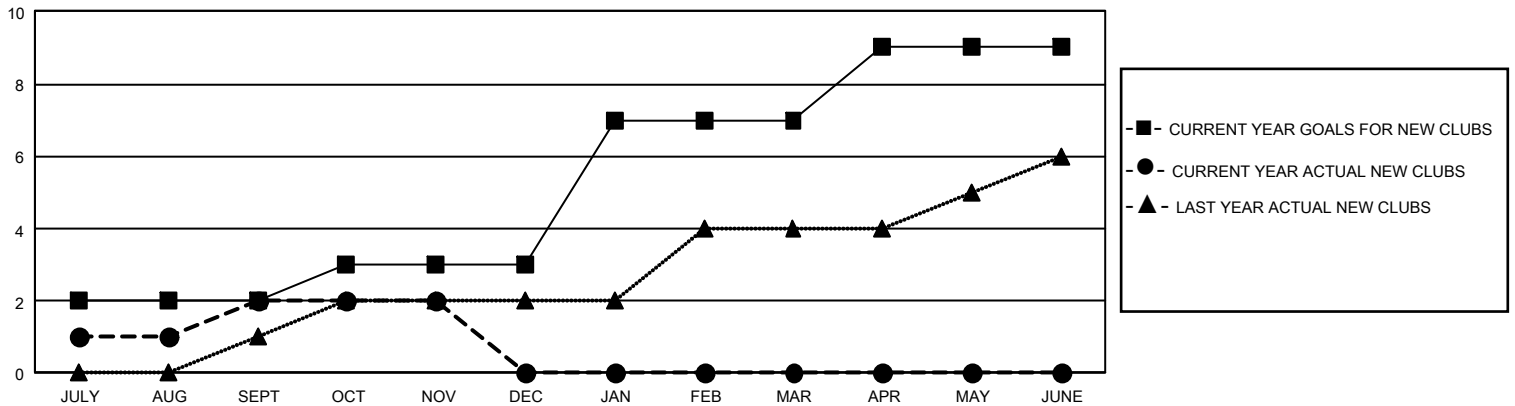
Results as of: 11/30/2025

GMT Constitutional Area 5 - J, Group G

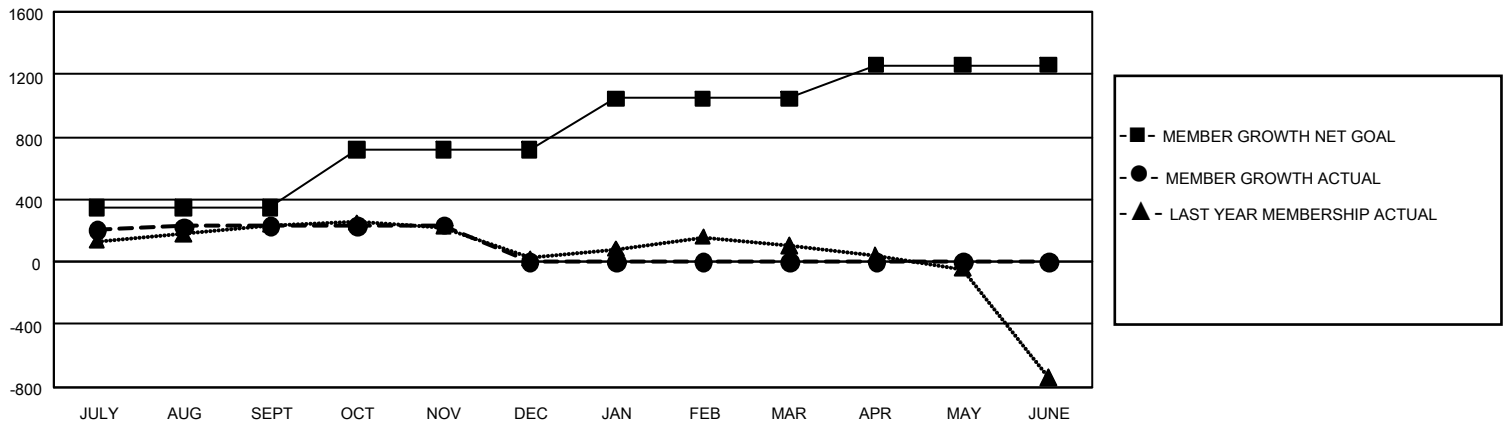
REPORT DOES NOT INCLUDE CLUBS IN UNDISTRICTED AREAS.

Clubs				Members			
RESULTS FOR 2025-2026				RESULTS FOR 2025-2026			
QUARTER	NEW CLUB GOAL	NEW CLUBS	DROPPED CLUBS	QUARTER	MEMBER GROWTH NET GOAL	MEMBER GROWTH ACTUAL	DROPPED MEMBERS ACTUAL (including transfers)
JULY/AUG/SEPT	6	2	1	JULY/AUG/SEPT	350	603	300
OCT/NOV/DEC	3	0	1	OCT/NOV/DEC	370	150	133
JAN/FEB/MAR	12	0	0	JAN/FEB/MAR	325	0	0
APR/MAY/JUNE	6	0	0	APR/MAY/JUNE	215	0	0

GOALS AND ACTUAL NEW CLUBS CUMULATIVE



GOALS AND ACTUAL MEMBERS CUMULATIVE



DROPPED CLUBS: 2

252 CLUBS OF 556 ADDED 1 OR MORE NEW MEMBERS

GENDER DISTRIBUTION

MALE	11,907 (79.98%)
FEMALE	2,975 (19.98%)
NON BINARY	1 (0.01%)
PREFER NOT TO ANSWER	4 (0.03%)

DROPPED MEMBERS

DECEASED	39
CLUB CANCELLED	0
OTHER	393
TOTAL	432

[CLICK HERE FOR CUMULATIVE MEMBERSHIP DATA](#)

TOTAL FAMILY UNIT MEMBERS	2,889
FAMILY MEMBERS PAYING HALF DUES	1,620